

A ♣

三角縁神獣鏡

♣ A



♣ A

Triangular Rimmed Deity and Beast Mirror

♣ A

2 ♣

石造模造品

♣ 2



♣ 2

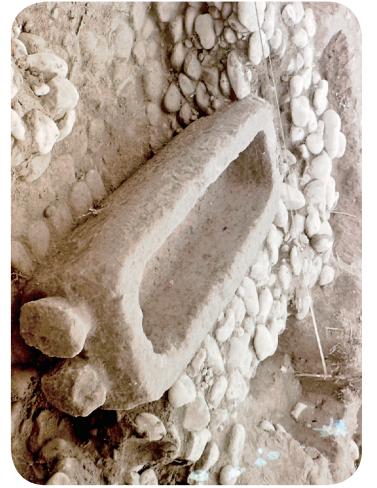
Stone Imitation

♣ 2

3 ♣

舟形石棺

♣ 3



♣ 3

Boat-shaped Sarcophagus

♣ 3

4 ♣

挂甲をつけた武人埴輪

♣ 4



♣ 4

Haniwa Armored Man

♣ 4

5 ♣

円筒埴輪

♣ 5



♣ 5

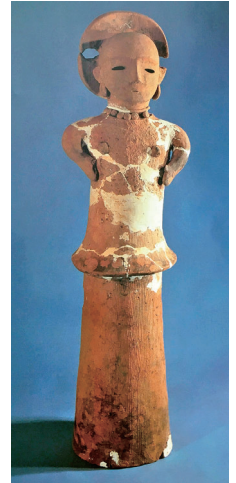
Cylindrical Ring Haniwa

♣ 5

6 ♣

正装する女性の埴輪

♣ 6



♣ 6

Formally Dressed Woman Haniwa

♣ 6

7 ♣

土師器

♣ 7



♣ 7

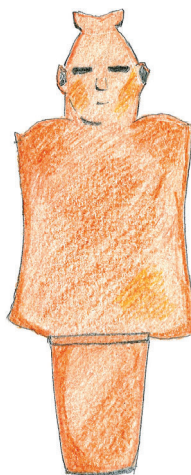
Haji-ki Earthenware

♣ 7

8 ♣

盾持ち人埴輪

♣ 8



♣ 8

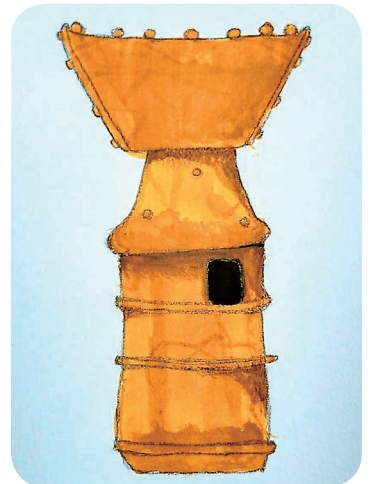
Shield Holder Haniwa

♣ 8

9 ♣

家形埴輪

♣ 9



♣ 6

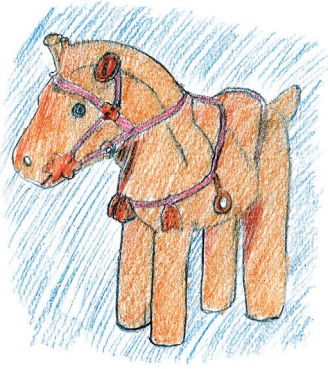
House-shaped Haniwa

♣ 6

10
♣

馬形埴輪

10
♣



♣
01

Horse-shaped
Haniwa

♣
01

J
♣

脚付銅鏡、杏葉、馬形埴輪

J
♣



♣
r

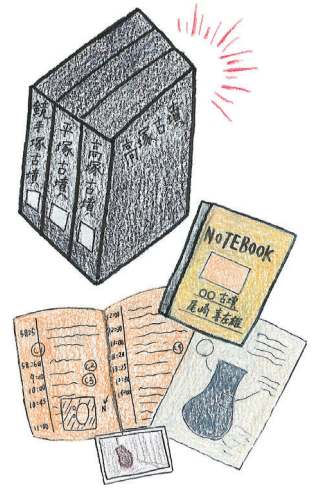
Grave Goods

♣
r

Q
♣

調査資料「黒箱」

Q
♣



♣
0

Survey Data
"Black Box"

♣
0

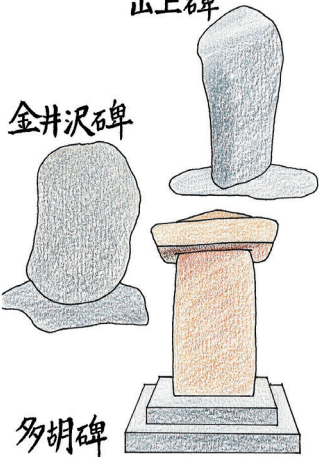
K
♣

上野三碑

K
♣

山上碑

金井沢碑



多胡碑

♣
K

Three Stelae in
Kozuke Province

♣
K

※A, ※6 写真提供：群馬県立歴史博物館